

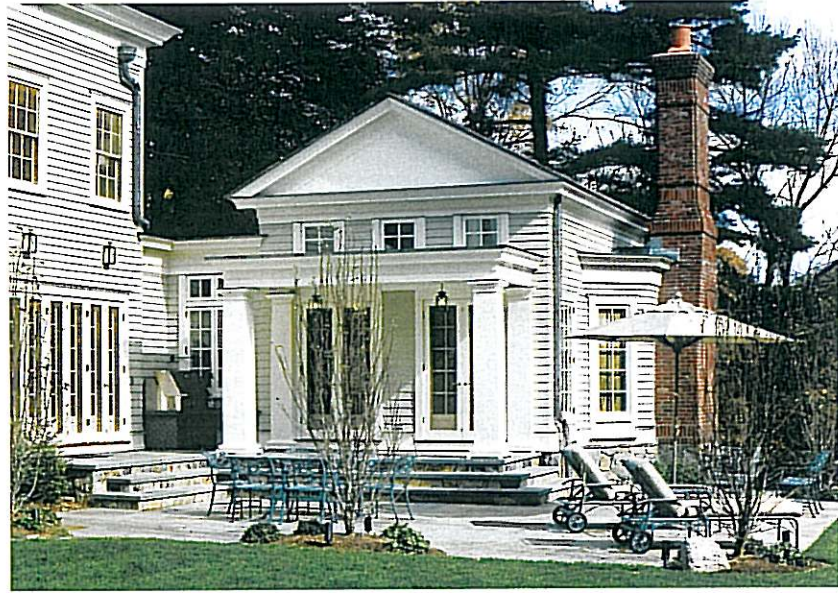


Austin Patterson Disston Architects

Dating from the late 1800s and early 1900s, this majestic Greenwich home, originally known as Braehead, was designed in a variety of architectural styles as a suburban men's camp for active New Yorkers. After a thorough renovation, which included a new wing and an addition, the only remaining original elements are a double-height living room, an adjoining game room, a dining room and a paneled foyer. ■ The homeowners sought to create new spaces for their family as well as an additional private guest wing. The main section of the house contains the family bedrooms, an office, a master suite and the game room. The new wing, featuring two garage bays flanking a porte cochere (which provides access to a separate carriage house in back), contains a guest suite on the second floor. At the rear of the house, the family room addition has a spacious lower level with an exercise area, staff bedroom and a boot room. Since the addition sits at a right angle to the main structure, two walls enclose a private terrace. The design of the house is now strongly Georgian Revival.

Peach of a Home | Architect McKee Patterson (OPPOSITE BOTTOM) transformed a century-old former men's camp into a Georgian Revival beauty. **Center Court** | The main section of the house (OPPOSITE TOP) contains the family bedrooms, including a master suite, along with an office and a game room. **It All Adds Up** | At the rear of the house, the family room addition (RIGHT) includes a basement with an exercise area, staff bedroom and boot room. **Spreading Out** | The family room

(BELOW) has plush appointments including Kravet sofas upholstered in Stout fabrics, a low table and end tables by Tui Pranich, Vaughan sconces and a chandelier by Studio Steel hanging from a bamboo-covered ceiling. Rosemary Bronne of Mayflower Design created the interiors. **In the Wing** | The guest suite (BELOW RIGHT) sits directly above a porte cochere in the new wing. An area rug by Saxony Carpet, wallpaper by Thibaut and a chandelier from The Federalist give the room a period appeal. See Resources.



The homeowners sought to create family spaces as well as an additional private guest wing

